

# Early Career Investigator (ECI) Workshop

---

*February 7, 2023*



Colorado State University

# Seminar Topics and Format

- Introduction to CSU units and resources supporting grant seekers
- Career planning and grants
- Identifying and evaluating funding opportunities
- Next steps for upcoming deadlines and what you can do now to prepare for future applications

Presentations and panel discussions followed by a Q & A.



# Presenters and Panelists

## CSU Writes & Graduate School

- *Kristina Quynn, Director and Assistant Dean of the Graduate School*

## Office of the Vice President for Research (OVPR)

- OVPR Executive Leadership
  - *Meghan Suter, Assistant Vice President for Research Administration and Operations*
- Office of Industry and Research Contracting
  - *Grant Calhoun, Director*
- Office of Sponsored Programs
  - *Shannon Irely & Kathryn O'Hayre, Training & Information Coordinators*
- Research Acceleration Office
  - *Dinaida Egan, Associate Director*

## University Advancement

- Foundation Relations
  - *Sam Ernst & Peter Hartman, Directors*
- Corporate & Foundation Relations
  - *Greg Lewis, Executive Director*

# CSU Units Supporting Faculty Grant Seeking

---

*Sponsored Programs, Research Administrators, Research Acceleration Office, CSU Writes, Corporate Relations, Industry Research Contracts, Foundation Relations*



Colorado State University

# Office of Sponsored Programs

Video File  
pending  
approval



# Office of Vice President for Research (OVPR)







What is.... Research Administration?

# What is a Sponsored Project?

- ▶ A sponsored project is an activity that is funded wholly, or in part, by an organization external to the University such as a federal, state, or public/private organization.





# CSU Research Administrators





PRE-AWARD

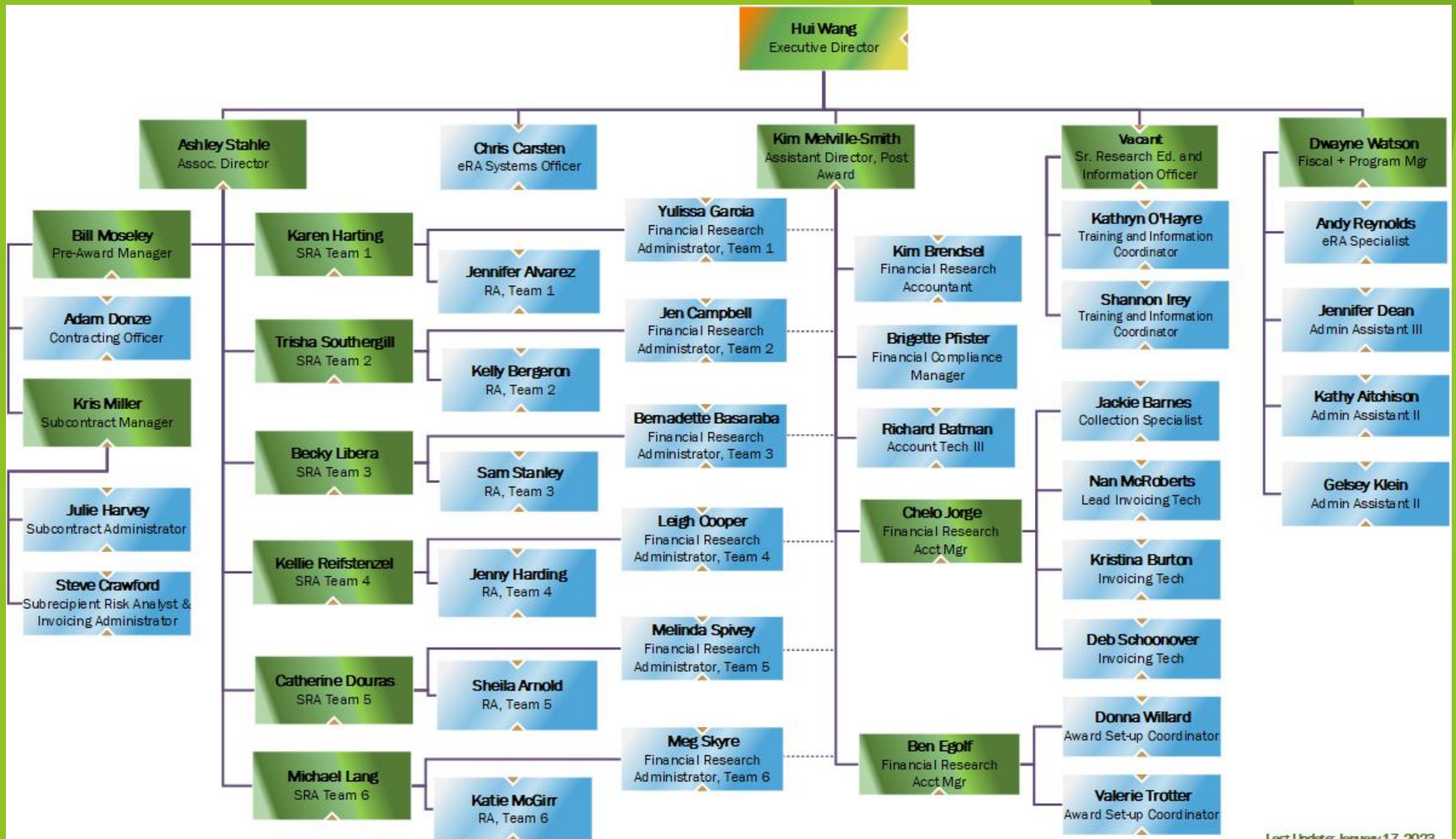


POST-AWARD



FULL LIFECYCLE







# Pre-award Overview

Research Administrators (RAs)

Senior Research Administrators (SRAs)

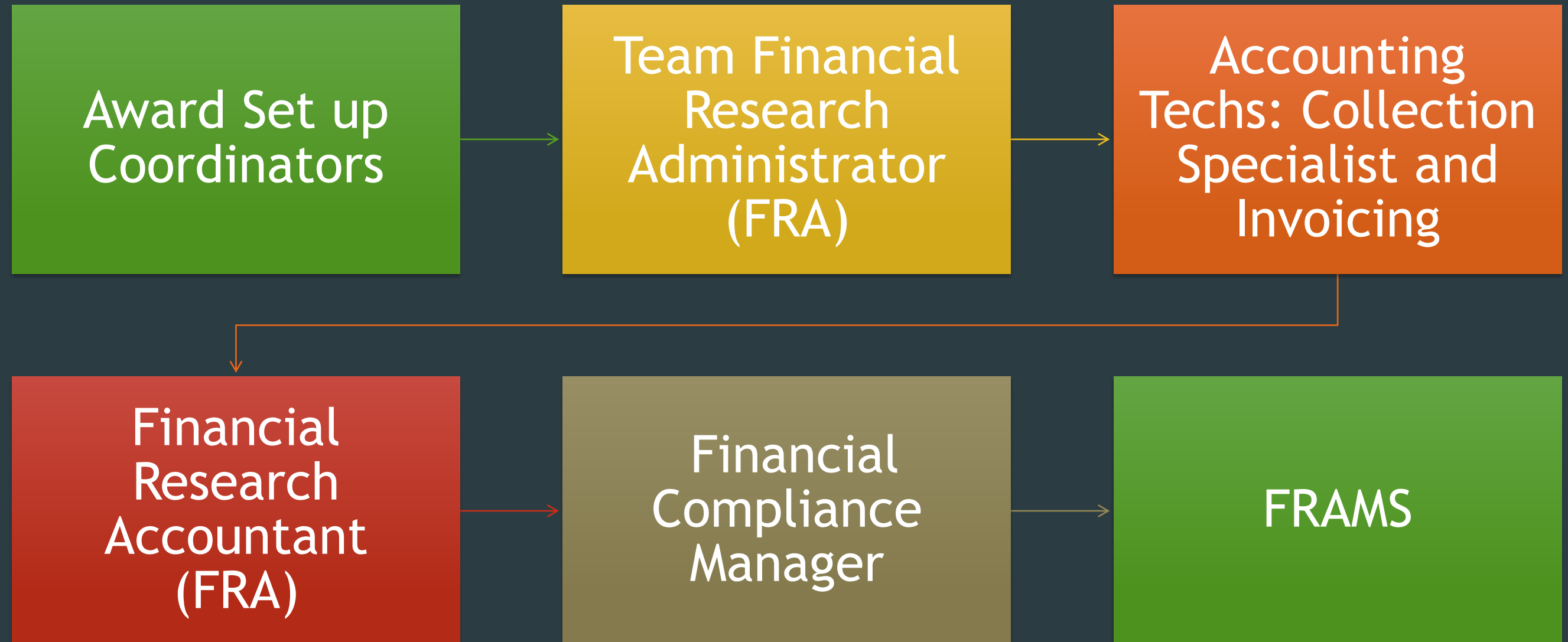
Team based - 6 teams support different colleges/units/dept

Review the budget and other business section components for compliance with University processes and policies, sponsor requirements, and Uniform Guidance

Negotiates terms and conditions of awards

Compiles notes to Award Set up Coordinator (post-award) for award set up

## Post-award Overview







# Contracting

Review incoming contracts/agreements

Administer non-financial agreements (e.g., Material Transfer Agreements, Non-Disclosure Agreements)

Work in tandem with CSU legal counsel

Collaboration with S/RA team



# Outgoing Subawards

Risk Assessment of Subrecipients

Administer pass-through awards to outside entities (aka subawards)

Work in tandem with S/RAs and DRAs to establish agreements and modifications

Process invoice and purchase order information



# eRA and Training Teams

Support systems for Research Administration

Assist with user roles and permissions

Resource communication and outreach

Education program development

‘Other duties as assigned’

# OSP Resources

- OVPR website - [www.research.colostate.edu/](http://www.research.colostate.edu/)
- OSP website - [www.research.colostate.edu/osp](http://www.research.colostate.edu/osp)
  - Staff Directory and Team portfolios - [www.research.colostate.edu/osp/staff/](http://www.research.colostate.edu/osp/staff/)
  - OSP Newsletter - <https://www.research.colostate.edu/osp/newsletters/>
  - Award Lifecycle & Roles and Responsibilities - <https://research.colostate.edu/osp/#AwardLifecycle>
- Administrative Applications and Resources (AAR) - [aar.is.colostate.edu/](http://aar.is.colostate.edu/)
- **kuali** Research - <https://colostate.kuali.co/cor/main/#/apps/>
- Research-Investigator listserv - [lists.colostate.edu/cgi-bin/mailman/listinfo/research-investigators](http://lists.colostate.edu/cgi-bin/mailman/listinfo/research-investigators)
- Agency websites



*Colorado State University*

# OFFICE OF THE VICE PRESIDENT FOR RESEARCH RESEARCH ACCELERATION OFFICE

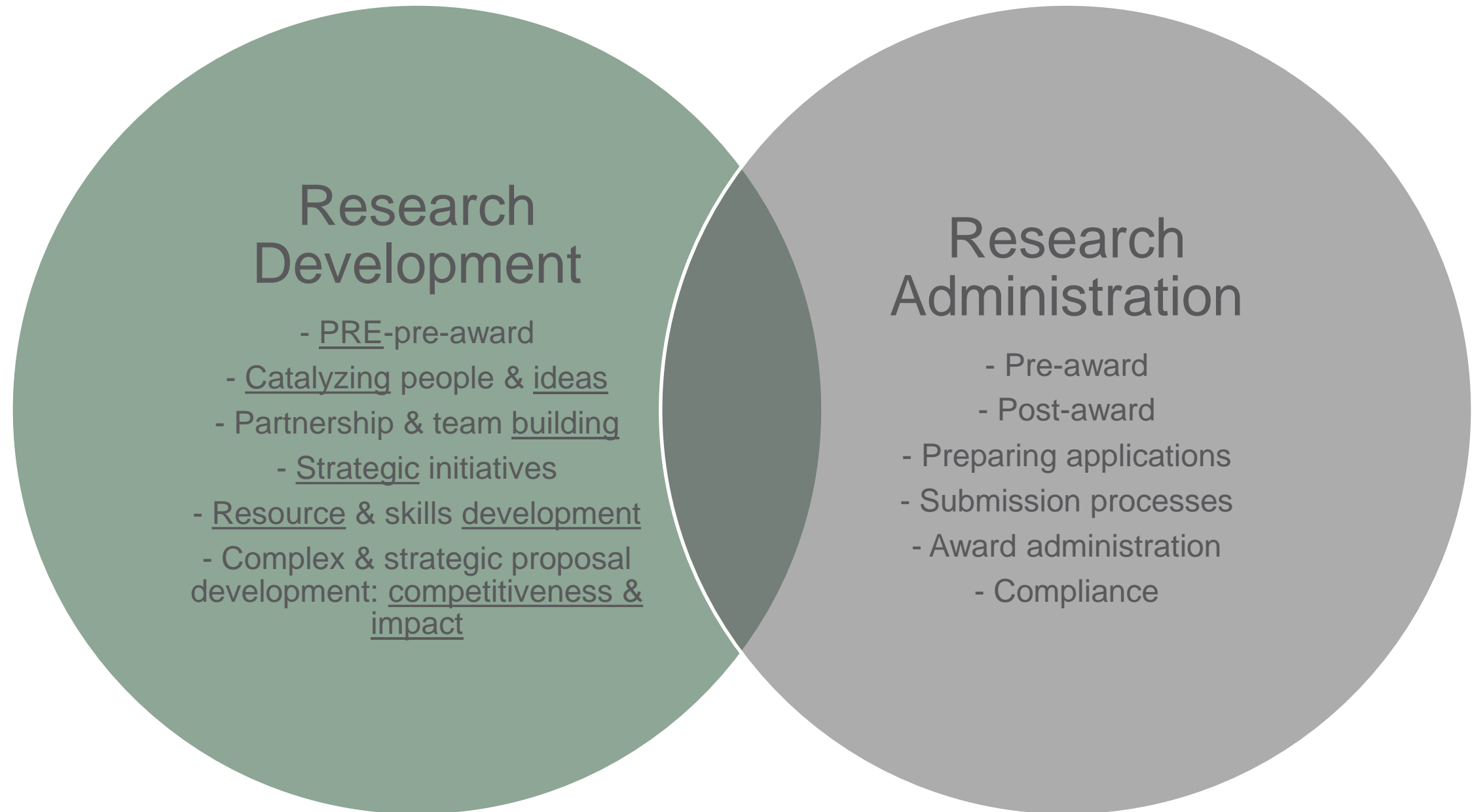


## RAO

- **Dinaida Egan**, Associate Director | [dinaida.lopez@colostate.edu](mailto:dinaida.lopez@colostate.edu)
- **Lynn Bruning**, Proposal and Alliance Management Coordinator | [lynn.bruning@colostate.edu](mailto:lynn.bruning@colostate.edu)
- **Megan Lear**, Graduate Research Development Associate | [megan.lear@colostate.edu](mailto:megan.lear@colostate.edu)
- **Majesty Cain**, Administrative Assistant | [majesty.cain@colostate.edu](mailto:majesty.cain@colostate.edu)
- **TBD Hire**, Research and Proposal Development Manager







*Research Development and Research Administration*  
*Modified from Jill Jividen, University of Michigan, 2016 (copyright)*  
*Research and Economic Development. (n.d.). Retrieved from <https://research.uiowa.edu/rdo>*

# Research Acceleration Office (RAO)

~ Established in 2016 to provide “Research Development” services

***Purpose: To attract research awards, create relationships and opportunities, and develop and implement strategies that increase the institutional research competitiveness and impact.***

***Mission: To provide strategic, proactive, catalytic and capacity-building services that empower individual researchers and scholars, research teams, and the OVPR.***

## Objectives:

- **Identify/create new opportunities** for CSU research, scholarship, and artistry (federal, state, private foundation, industry)
- **Position** and align CSU for significant funding opportunities, through **partnership and strategic program management**
- **Align** researchers/teams with strategic/significant funding and collaboration opportunities
- Support creation of new **interdisciplinary research/scholarship/artistry teams**, and strengthen existing teams
- Increase number of **competitive proposals** submitted to strategic/significant funding opportunities
- Increase **success and recognition** of CSU's overall research/scholarship/artistry enterprise

# Key RAO Functions

## ➤ Partnership Development & Management:

- Collaborative partnership identification, gap-filling, strengthening (academic, industry, federal, etc.)
- Strategic interaction with funding agencies, industry, and community partners
- *Programs: Agricultural Biosecurity Consortium (CERES); Cybersecurity Initiatives; CO-WY Engine*

## ➤ Strategic Research Initiatives

- Opportunity creation aligned with institutional priorities and strengths
- Mandatory cost share request management
- Proposal/program review and realignment
- *Programs: Early Career; Thematic Units of Excellence (TUNE), Anschutz Pandemic Resilience Projects & Fellowship, Quarterly Strategic Initiative, OVPR Center/Institute opportunities (CHA, OHI, IDRC, DSRI, EI)*

## ➤ Team/Transdisciplinary Science Program

- Resources, tools, strategies, and events to promote cross-college, multi-department, multi/inter-disciplinary, internal/external collaborations
- Science of Team Science, Institute for Research in the Social Sciences (IRISS), etc.
- *Programs: Catalyst for Innovative Partnerships (CIP), Pre-Catalyst (PRECIP)*

## ➤ Research Analytics & Competitive Intelligence

- Identification of institutional priorities and strategic planning
- Faculty expertise/activity databases and other strength tools
- Competitive landscaping
- Marketing of research/scholarship activities and strengths

## RAO Functions & Programs

- *Partnership Development & Management*
- *Strategic Research Initiatives*
- *Team/Transdisciplinary Science Program*
- *Research Analytics & Competitive Intelligence*
- *Faculty Development & Individualized Support*
- *Limited Submission & Internal Funding Programs*
- *Complex and Strategic Proposal Development Program*



# Key RAO Functions Cont'd

## ➤ Faculty Development & Individualized Support

- Research visioning, funding planning
- Workshops, strategy sessions
- Proposal skill development, grantsmanship, and teaming support
- Faculty-led sponsor engagement for opportunity creation
- Funding identification tools - InfoEd Global SPIN database (<https://spin.infoedglobal.com>); grants.gov; (see also Foundation Relations funding list; email list subscriptions; etc.)

## ➤ Limited Submission Program

- Announcement, review, selection, and realignment for limited submission opportunities
- CSU's InfoReady Review: <https://colostate.infoready4.com/> (join listserv for announcements)

## ➤ Complex and Strategic Proposal Development Program

- Project management and development
- Includes: long-term planning; strategy; competitive alignment; road-mapping; stepping-stone activities; writing/editing/review/feedback; resubmission strengthening; leveraging of institutional resources; increasing impact and outcomes (e.g. broader impacts, workforce development, translation to practice, community engagement)
- *Complex*: Multiple depts/colleges, external partners/subs, international partners; extensive cost share requirements; large budgets (> \$1M direct/year – or equivalent for CLA)
- *Strategic*: Of particular interest and/or priority to the colleges or university

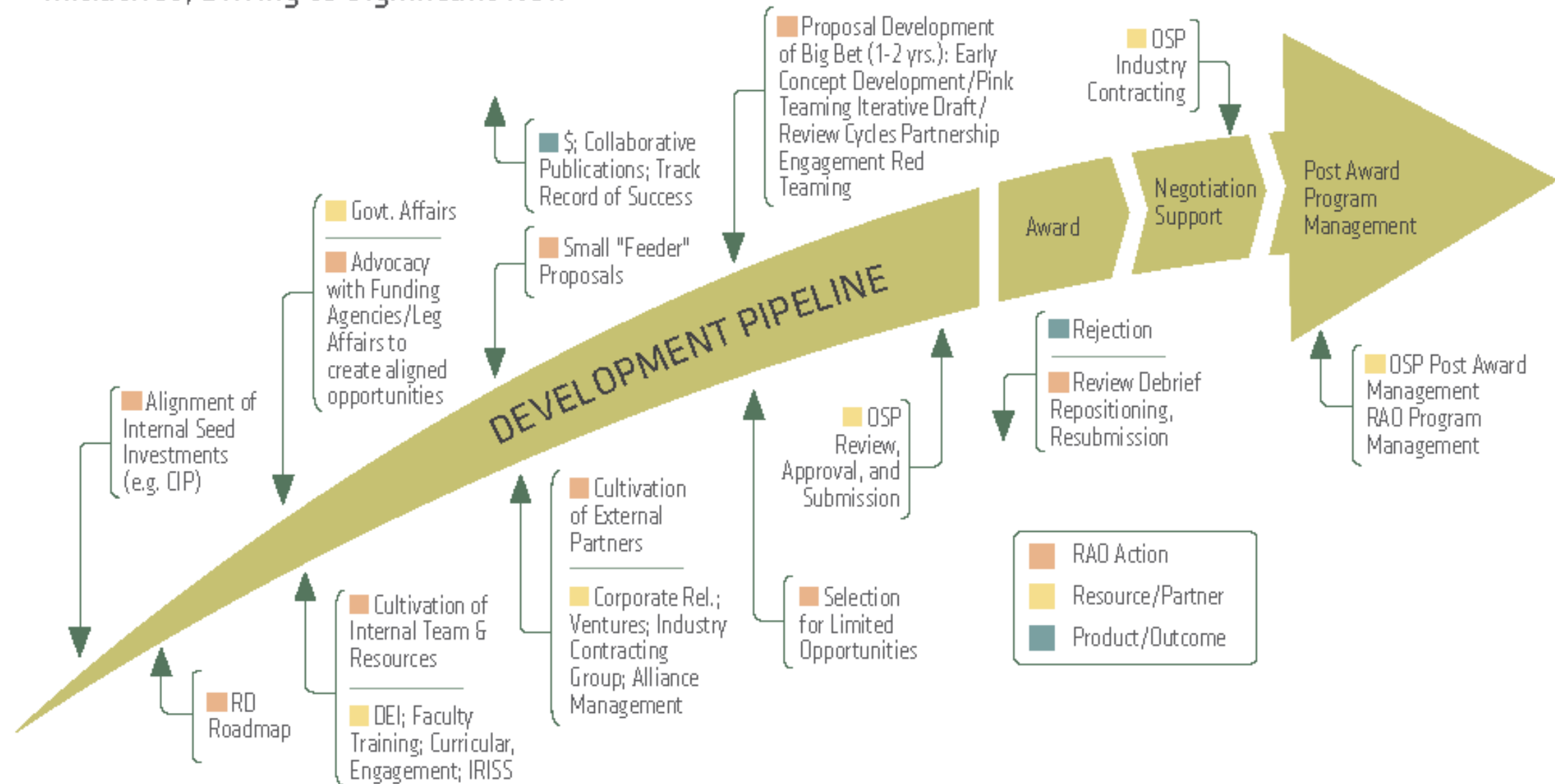
## RAO Functions & Programs

- Partnership Development & Management
- Strategic Research Initiatives
- Team/Transdisciplinary Science Program
- Research Analytics & Competitive Intelligence
- **Faculty Development & Individualized Support**
- **Limited Submission & Internal Funding Programs**
- **Complex and Strategic Proposal Development Program**



# Research Development Pipeline

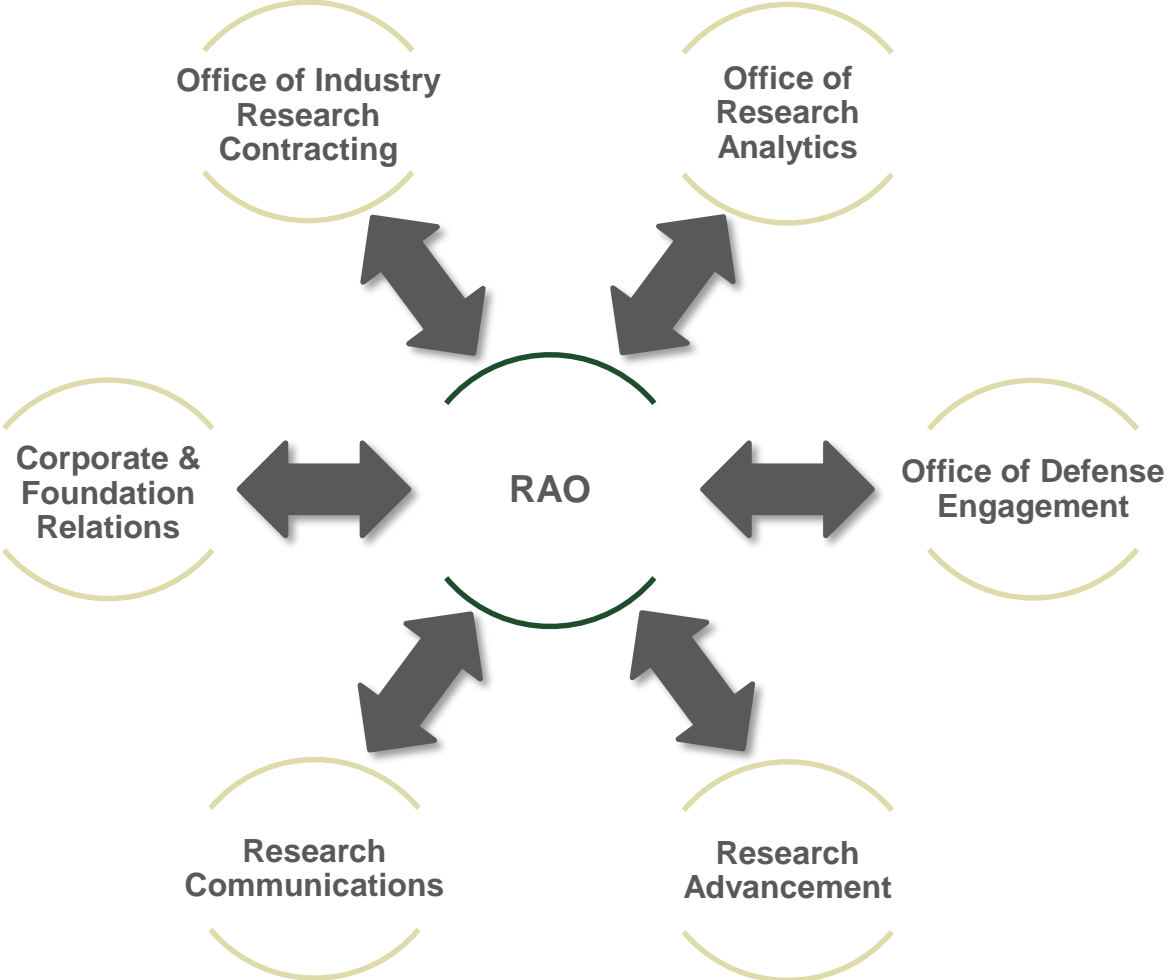
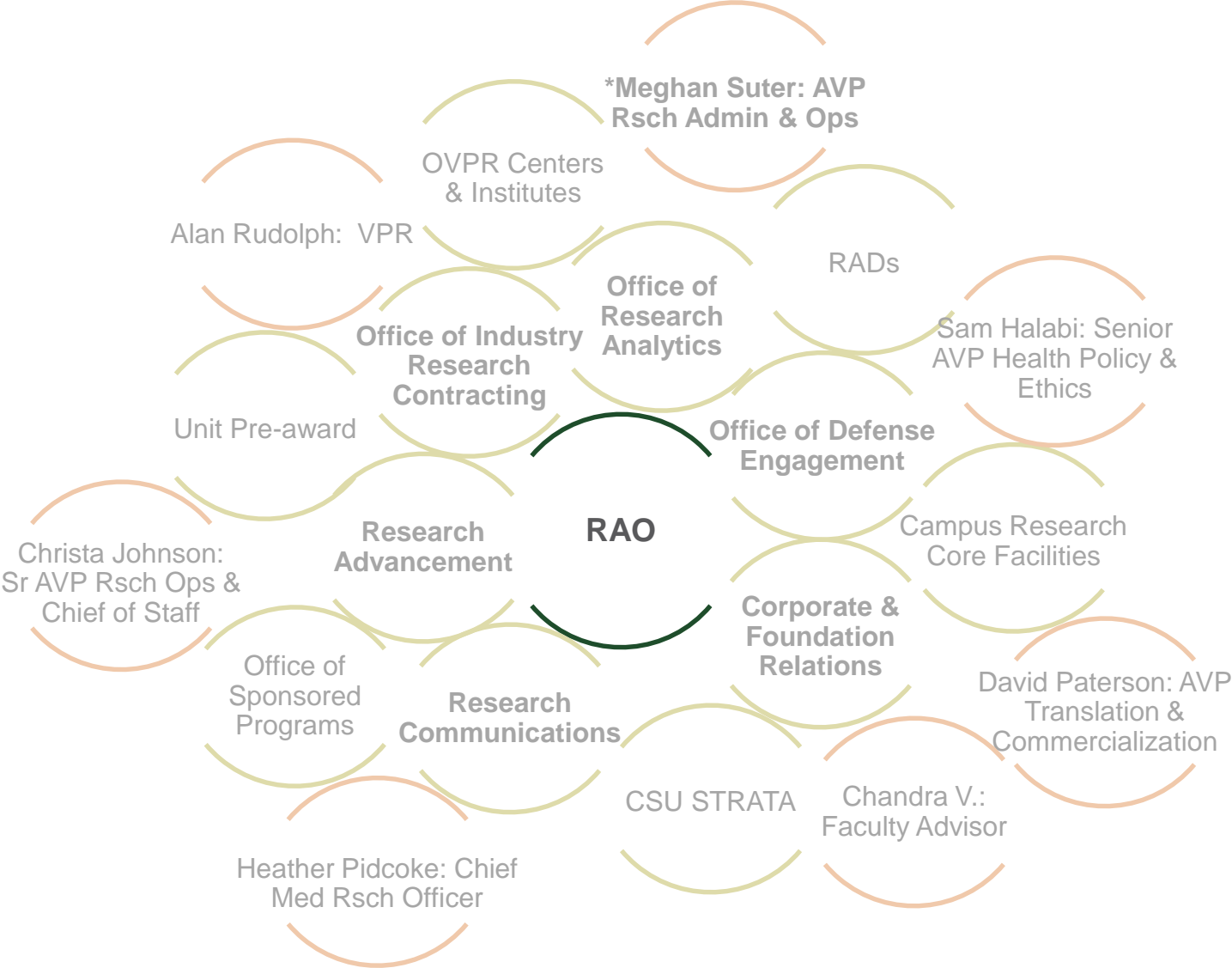
Long-Term, Focused, Development Support for Large, Complex Proposals and Strategic Research Initiatives, Driving to Significant ROI.





# Research Acceleration Office

## Operational Ecosystem





*Colorado State University*

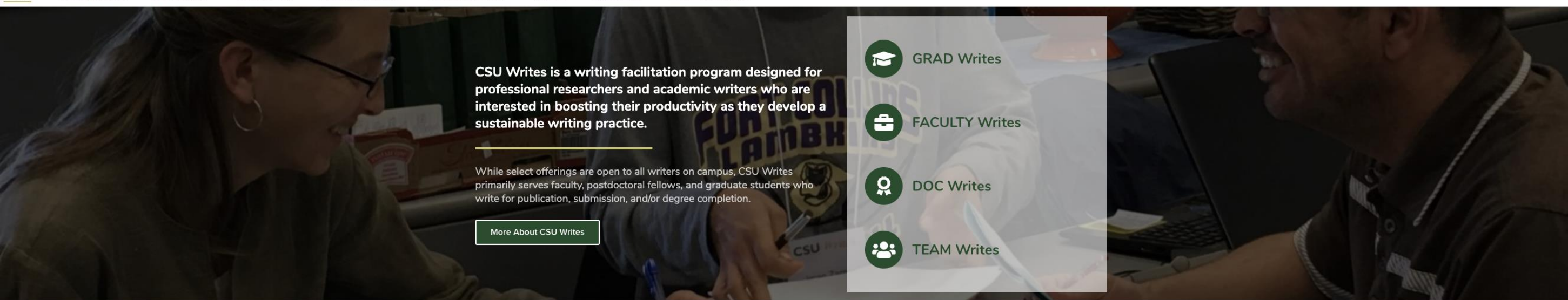
# OFFICE OF THE VICE PRESIDENT FOR RESEARCH RESEARCH ACCELERATION OFFICE



## Want to Chat? Just Contact Us!

RAO is on the 5<sup>th</sup> floor of the University Services Center (USC), Suite 521, at 601 S. Howes St. (North of Mugs Coffee on Laurel)

- **Dinaida Egan**, Associate Director | [dinaida.lopez@colostate.edu](mailto:dinaida.lopez@colostate.edu) | 970.491.2448
- **Lynn Bruning**, Proposal and Alliance Management Coordinator | [lynn.bruning@colostate.edu](mailto:lynn.bruning@colostate.edu)



CSU Writes is a writing facilitation program designed for professional researchers and academic writers who are interested in boosting their productivity as they develop a sustainable writing practice.

While select offerings are open to all writers on campus, CSU Writes primarily serves faculty, postdoctoral fellows, and graduate students who write for publication, submission, and/or degree completion.

More About CSU Writes

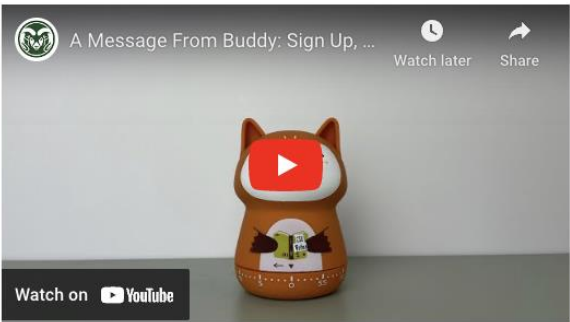
GRAD Writes

FACULTY Writes

DOC Writes

TEAM Writes

CSU Writes Introduces Buddy



Events

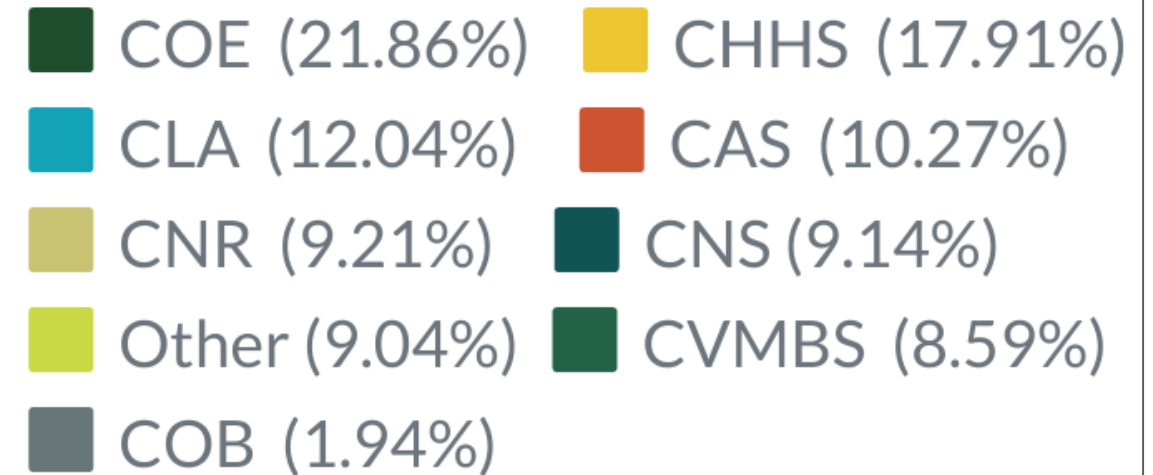
- Feb 3 Fri** FAC Writes: Writing Retreat  
Fri, Feb 3, 2023, 8:30am  
zoom.us...
- Feb 3 Fri** GRAD Writes: Writing Retreat Planning Session  
Fri, Feb 3, 2023, 3pm  
teams.microsoft.com...
- Feb 4 Sat** FAC Writes: Writing Retreat  
Sat, Feb 4, 2023, 8:30am  
zoom.us...
- Feb 4 Sat** GRAD Writes: Writing Retreat  
Sat, Feb 4, 2023, 8:30am  
Student Services RM 133

CSU Writes Vision:

CSU researchers and scholars build ideas, innovations, careers, and communities by writing. Our research/scholarship changes the world because it is published, funded, and cited. CSU Writes facilitates writing engagement, development, contribution, and excellence across our diverse disciplines and research/scholarly communities.

# Research Design

- **Program and Focus:**
  - program designed on research-proven models “writing in social spaces” & “writing containment”
  - conduct research on “writing support across the career-span” and “relational writing practices”
  - writing as career & professional development
- **Funded by Graduate School & OVPR**
  - Projects, USGS, NIH T32
- **We ARE NOT the Writing Center 😊**



**GRADUATE SCHOOL**  
COLORADO STATE UNIVERSITY



**VICE PRESIDENT  
FOR RESEARCH**  
COLORADO STATE UNIVERSITY



# Grant Writes

- Often partner with RAO and seasoned grant writers at CSU
- Work/Review Groups
  - NSF
  - NIH
  - Mixed
- **WARP:** Writing Accountability for Research Projects, weekly check-ins



## GRANT WRITING SUPPORT

Proven methods to help CSU researchers produce high-quality proposals with greater ease

**FEBRUARY - JUNE 2023**

Register: [CSU Writes website Grants](https://csuwrites.colostate.edu/grants/)  
Email: [csuwrites@colostate.edu](mailto:csuwrites@colostate.edu)  
Events held on MS-Teams

Kristina Quynn, Ph.D., CSU Writes  
Dinaida Egan, RAO, OVPR  
Jeff Wilusz, MIP  
Izabela Ragan, Biomedical Sciences

## SCHEDULE

Register: <https://csuwrites.colostate.edu/grants/>

### GRANT Work & Review Groups

**Launch FEB 17**

**Writers can join a group up to MAY 1**

Organized through CSU Writes, groups meet weekly for accountability and feedback to build momentum and craft high-quality proposals.

### Accountability Writing Sessions

**FEB 7 - MAY 9**

**Tuesdays & Thursdays, 2-4pm**

**([JOIN SESSION HERE](#))**

Led by Dr. Izabela Ragan of Biomedical Sciences, these drop-in virtual writing sessions help writers set a regular time for proposal writing and provide low-stakes accountability.

### GRANT WRITING RETREATS

**FEB 17, 8:30 am -4pm ([JOIN HERE](#))**

**APR 21, 8:30 am -4pm ([JOIN HERE](#))**

Each retreat affords grant writers up to 5 hours of dedicated prep and writing time, expert speaker presentations, and afternoon breakout discussion sessions. Retreats are a great opportunity for researchers to make significant progress on a proposal in a collegial environment.

### Proposals at the Sentence Level

**MAR 23, 2-2:50 pm ([JOIN HERE](#))**

A webinar co-led by Dr. Jeff Wilusz (MIP) and Dr. Kristina Quynn to examine what makes proposals succeed or fail and why at the sentence-level.





# Work/Review Groups

“I was still struggling to clearly define the scope of work and motivation for my proposal when these meeting started. This editing group has helped to get past that obstacle....”

*“Overall, the peer editing helped considerably in the development of logic, argument, and word choice in my proposal ...One of the reasons I think this peer editing group was, and is, so beneficial is that the process provides early feedback when we might not otherwise solicit feedback.”*



# Participate strategically; Share widely

- Workshops
- Retreats (2 – 5-Day options)
- Work/Review Groups
  - Manuscripts
  - Proposals
- show up & write.
- Department or College Specialty Offerings
- Guest Talks & Panels
  - small panel/BIG TOPIC



# Corporate Relations and Office of Industry Research Contracting

---



Colorado State University

# Stronger, Holistic Corporate Relationships

1

Students become employed by top companies and ultimately give back to CSU. Improves the “value” of CSU education.

2

Industry funds world class research that improves both local & global economies. Improves the CSU “brand” and fulfills land grant mission.

3

Corporations see enough value in the relationship to invest philanthropically in the future success of CSU. Build world class facilities, attract top talent, fund students.





# Overview of Corporate Relations

## The Corporate Landscape

Over 5,000 companies have hired CSU students since 2016

Average \$40M in private support from industry

*\*Combined research and philanthropy*

Nearly 2000 vendor relationships

## Data Collection and Analysis

- Recent hiring numbers
- Procurement relationship
- Research Funding
- Philanthropic Contributions (cash & in-kind)
- Advisory Board/Classroom Participation
- Alumni Totals

## Consulting Service

- Meet with CR Team to discuss projects

## “Executive Experience”

- Campus visits





# Proposals to Industry Partners

## Philanthropy vs Research Contract

- Work with Corporate Relations and/or VP Research to identify potential partners
- Office of Industry Research Contracting for contract-based proposals (Intellectual Property; deliverables)
- Corporate Relations Team for philanthropy (solicitation materials and invoicing for corporations)

## Corporate Foundations and Giving

- True corporate philanthropy is relatively limited
- Corporate Foundations often come to us... but not always (e.g., Xcel vs IBM)
  - Process similar to large foundations (defined process, limit number of proposals)
- ROI (talent pipeline, research, visibility, etc.)

## Relationships

- Often initiated by VPR leadership, Advancement, Strada, etc., but strengthened by faculty
- Often initiated by faculty, but strengthened by Corporate Relations and Industry Contracting team through stewardship

# Foundation Relations

- In University Advancement, but majority of focus is on PI-led proposals to private foundations.
- Assists CSU faculty and staff grant seekers by:
  - Identifying private foundation funding opportunities.
  - Building grant seeking skills and providing resources.
  - Assisting proposal writers with strategy, narrative comments, and finalization.
  - Grant administration, reporting, and long-term stewardship for foundations.
- Partners with RAO on foundation limited submissions.
- Available for individual consultations about funding ideas, possibilities, and next steps. Contact us: Sam Ernst ([sam.ernst@colostate.edu](mailto:sam.ernst@colostate.edu)) or Peter Hartman ([peter.hartman@colostate.edu](mailto:peter.hartman@colostate.edu))

<https://giving.colostate.edu/corporate-and-foundation-relations/>

## Resources to help engage with corporations and foundations:

[Principles of Effective Grant Seeking](#) (PDF)

[So, You're Writing a Proposal](#) (PDF)

[So, You've Received a Grant](#) (PDF)

[Quick Guide to Foundation 990s](#) (PDF)

[Corporate Relations checklist](#) (PDF)

[Corporate sponsorship toolkit](#) (PDF)

Hone your grant writing with [CSU Writes](#)

## Resources for Faculty, Staff and Grant Seekers

We help the University community advance relationships with private foundations.

### Find Funding Opportunities:

Curated list of [Funding opportunities, updated monthly](#) (PDF)

[InfoReady limited submission opportunities](#)

[Colorado Grants Guide](#)

[Search for funding opportunities on SPIN](#)

New to SPIN? [Start here](#)

[Research Acceleration Office](#) – a great resource for complex research proposal development

<https://giving.colostate.edu/corporate-and-foundation-relations/>

## Resources to help engage with corporations and foundations:

[Principles of Effective Grant Seeking](#) (PDF)

[So, You're Writing a Proposal](#) (PDF)

[So, You've Received a Grant](#) (PDF)

[Quick Guide to Foundation 990s](#) (PDF)

[Corporate Relations checklist](#) (PDF)

Corporate [sponsorship toolkit](#) (PDF)

Hone your grant writing with [CSU Writes](#)

<https://giving.colostate.edu/corporate-and-foundation-relations/>

## Resources for Faculty, Staff and Grant Seekers

We help the University community advance relationships with private foundations.

### Find Funding Opportunities:

Curated list of [Funding opportunities, updated monthly](#) (PDF)

[InfoReady limited submission opportunities](#)

[Colorado Grants Guide](#)

[Search for funding opportunities on SPIN](#)

New to SPIN? [Start here](#)

[Research Acceleration Office](#) – a great resource for complex research proposal development



# Also Supporting Faculty Grantseeking

## **Institute for Research in the Social Sciences (IRISS)**

Connects and supports social scientists with other researchers, as well as university, community, and industry partners to enhance social science research capacity; improve grant competitiveness campus-wide; promote interdisciplinary research networking opportunities; and provide and support research methods training.

- Jeni Cross, Director; Associate Professor, Sociology; [jeni.cross@colostate.edu](mailto:jeni.cross@colostate.edu)

## **The STEM Center**

Dedicated to building partnerships, connecting people and resources, building capacity for education and outreach, engaging in collaborations, and showcasing Colorado State University's work in STEM research, education, and engagement.

- Laura Sample McMeeking, Executive Director; [laura.sample\\_mcmeeking@colostate.edu](mailto:laura.sample_mcmeeking@colostate.edu)

# Early Career Awards and Your Career Plan

---

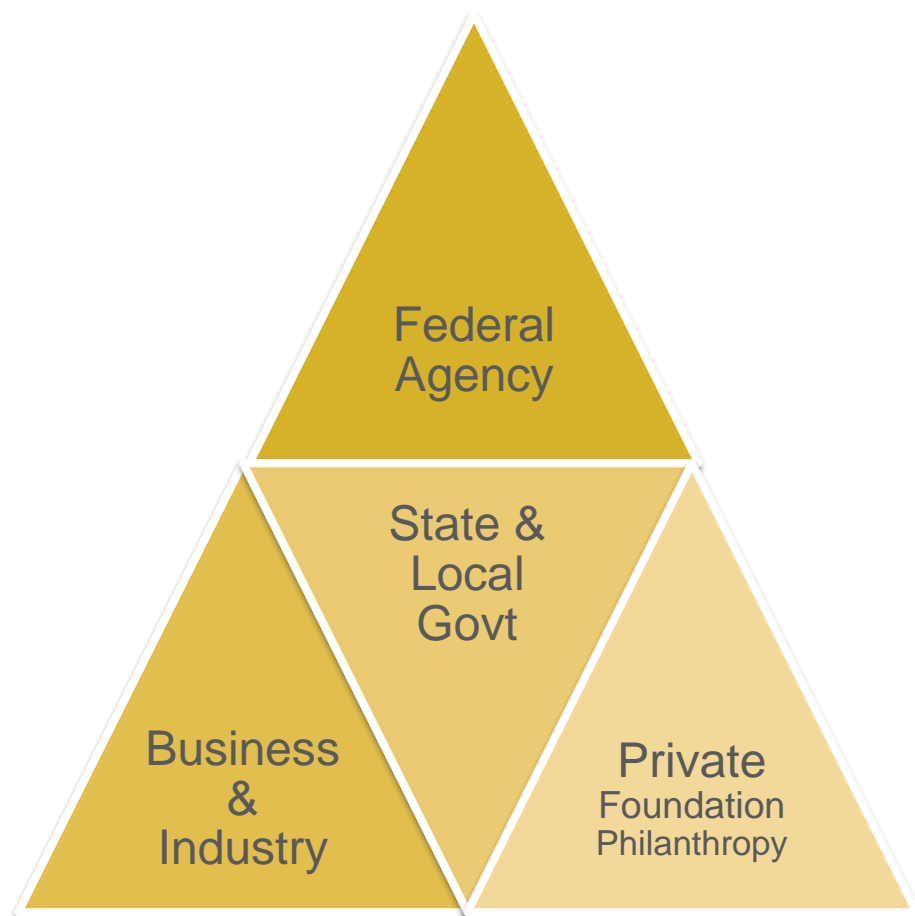


Colorado State University

# Types of Funds Available to ECIs

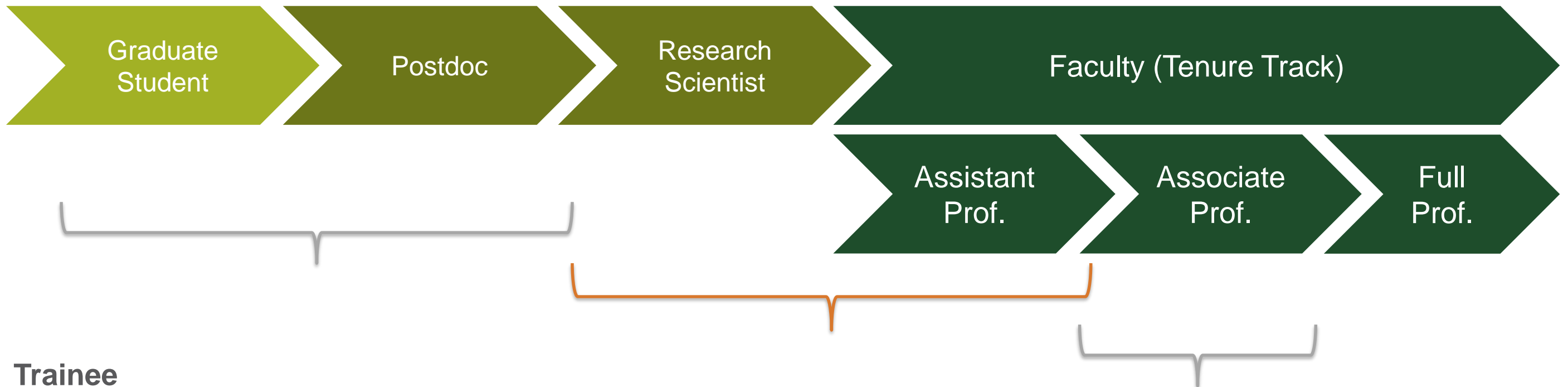
Least Structured

Most Structured



Research	Curriculum Development	Equipment / Infrastructure
Fellowships/ Career Development	Access to Federal Labs	Training
Workforce Development	Scholarship	Extension, Community Outreach

# “ECI” Awards - Tenure Track Career Path



## Trainee

- Graduate students and postdocs – generally not the Principal Investigator (PI or Co-PI)

## Early Career Investigator (ECI) / Early-Stage Investigator (ESI) / Young Investigator (YIP)

- Within 3 - 10 years of terminal degree or post-grad clinical training
- Within 5 - 8 years of first independent research-related appointment date

## New Investigator / Junior Investigator

- Has not previously competed successfully for substantial, independent funding

## Career Development

- Can be mentored or independent, and can include postdocs and faculty (early to mid-career)

# Who Can be PI on These Awards at CSU?

- Eligibility to act as a principal investigator (PI) or co-principal investigator (Co-PI) on a sponsored project is limited to CSU employees with the necessary skills and knowledge to comply with all award regulations and requirements and who have an appointment type that permits serving as a PI or Co-PI.
- PIs are responsible for determining the intellectual direction of the research and scholarship and often for the training of graduate students and postdoctoral appointees
- *Graduate research assistants, postdoctoral fellows, and adjunct faculty are considered temporary appointments and therefore are generally not eligible to serve as PI or Co-PI.*
- *Exceptions:* At times it may be beneficial to grant exceptions to students; postdoctoral fellows; research associates; faculty affiliates; adjunct, visiting, or contract faculty; emeritus faculty; temporary employees; non-salaried employees; retired employees; or non-CSU employees to serve as a PI or Co-PI. ***All exceptions must be approved in writing by the cognizant department chair or unit head and college dean or equivalent.***



# Early Career Awards

- Why focus on them?
  - Many options, some with very good odds.
  - Mostly federal and foundation opportunities, some corporate.
- How are they different?
  - "Investigator-driven" proposals focus as much on the individual and their potential as the research. For some awards, the details of the research may be secondary (but still important).

# Finding Funding

---

*Identifying and distributing funding opportunities, managing electronic funding opportunity systems, obtaining successful proposals*

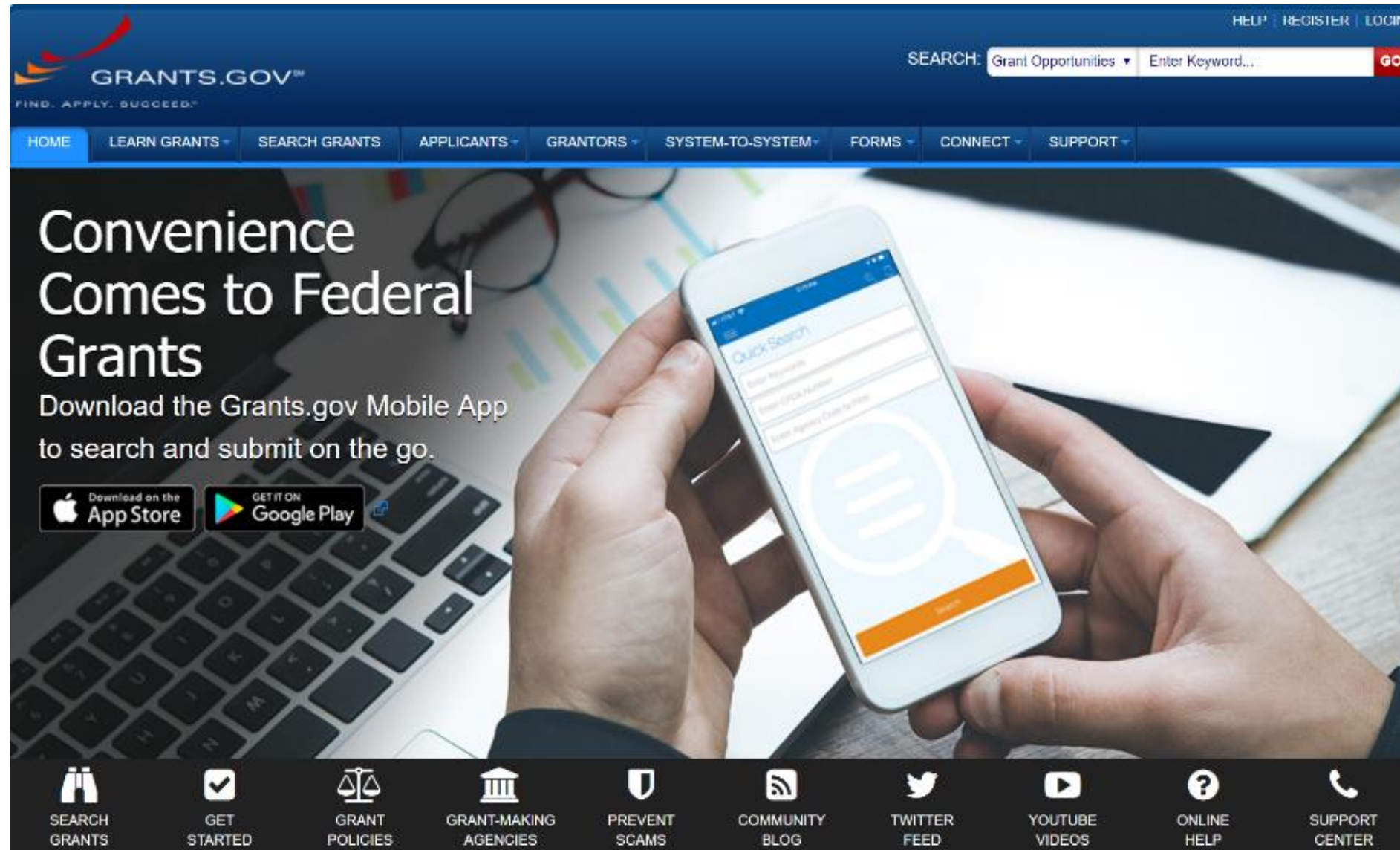


Colorado State University

# Finding Federal Funding Opportunities

- SAM.gov
  - Grants.gov
  - InfoED Global SPIN database
  - Limited Submissions: CSU's InfoReady Review
  - Sponsoring agency websites
  - Subscription-based services
- SPIN – [spin.infoedglobal.com](http://spin.infoedglobal.com)
  - Pivot – [pivot.cos.com](http://pivot.cos.com)
  - GrantForward – [grantforward.com](http://grantforward.com)
  - GrantSelect – [grantselect.com](http://grantselect.com)
  - InfoReady – [colostate.infoready4.com](http://colostate.infoready4.com)

# Grants.gov: Find, Apply, Succeed



## SEARCH GRANTS



## BASIC SEARCH CRITERIA:

Keyword(s): Opportunity Number: CFDA: 

SEARCH

## OPPORTUNITY STATUS:

☒ Forecasted (0)☒ Posted (6)☐ Closed (1)☐ Archived (60)

## FUNDING INSTRUMENT TYPE:

☒ All Funding Instruments☐ Cooperative Agreement (1)☐ Grant (5)

## ELIGIBILITY:

Information on Eligibility for clarification) (8)

☐ Private institutions of higher education (7)☒ Public and State controlled institutions of higher education (6)☐ Public housing authorities/Indian housing authorities (6)

## CATEGORY:

☒ All Categories☐ Education (4)☐ Health (6)

## AGENCY:

☒ All Agencies☐ All Department of Health and Human Services [HHS] (6)

• ELIGIBILITY: [X] Public and State controlled institutions of higher education

[Search Tips](#) | [Export Detailed Data](#)SORT BY:  Update SortDATE RANGE:  Update Date Range

## 1 - 6 OF 6 MATCHING RESULTS:

Opportunity Number	Opportunity Title	Agency	Opportunity Status	Posted Date	Close Date
<a href="#">PAR-19-229</a>	Informatics Methodology and Secondary Analyses for Immunology Data In ImmPort (UH2 Clinical Trial Not Allowed)	HHS-NIH11	Posted	03/22/2019	10/01/2019
<a href="#">PA-18-784</a>	The Mechanistic Role of the Microbiome In the Pathobiology of Heart, Lung, Blood, and Sleep Diseases (R01 - Clinical Trial Not Allowed)	HHS-NIH11	Posted	05/14/2018	09/07/2021
<a href="#">PA-18-876</a>	Advancing Mechanistic Probiotic/Prebiotic and Human Microbiome Research (R01 Clinical Trial Not Allowed)	HHS-NIH11	Posted	07/25/2018	09/07/2021
<a href="#">PA-18-902</a>	Advancing Translational and Clinical Probiotic/Prebiotic and Human Microbiome Research (R01 Clinical Trial Optional)	HHS-NIH11	Posted	08/14/2018	09/07/2021
<a href="#">PAR-19-194</a>	Microbial-based Cancer Therapy -Bugs as Drugs (R21 Clinical Trial Not Allowed)	HHS-NIH11	Posted	02/22/2019	05/07/2022
<a href="#">PAR-19-193</a>	Microbial-based Cancer Therapy -Bugs as Drugs (R01 Clinical Trial Not Allowed)	HHS-NIH11	Posted	02/22/2019	05/07/2022





# SPIN

World's Largest Database of Sponsored  
Funding Opportunities

Tricia Callahan Colorado State University [Sign Out](#)

Search ▾

Preferences ▾

Saved Searches ▾

Funding Alerts ▾

Bookmarks ▾

Help ▾

Add New

Full Program

Results Found

Drag a column

SPIN

0343

0827

005974

012556

080856

026847

018883

Applicant Location

Applicant Type

Project Type

Project Location

Citizenship

Sponsor Type

Limit to:

US Federal Opportunities:

Include

Limited Submission Opportunities:

Include

Closed Opportunities:

Exclude

Display Currency:

United States Dollars

Export Data Options

Locate Funding

Save

immunology

Additional filters active. [Click here to edit them.](#)

[Reset Filters](#)

[Export](#)

Sponsor Number

Deadline Date

Funding Amount

30-Jun-2019

10,000.00 USD

16-Aug-2019

148,000.00 USD

01-Jul-2019

1,260.00 USD

15-Jul-2019

Not Specified

01-Oct-2019

275,000.00 USD

13-Sep-2019

Not Specified

Continuous Submission

Not Specified

[Communicating Immunology Grants](#)

British Society for Immunology

[Allergy and Immunology Fellowship \(Minnesota\)](#)

Mayo Clinic College of Medicine

[Informatics Methodology and Secondary Analyses for Immunology Data in ImmPort \(UH2 Clinical Trial Not Allowed\)](#)

National Institute of Allergy and Infectious Diseases/NIH/DHHS

[Short Term Fellowships](#)

European Federation of Immunological Societies

[Department of Pediatrics - Allergy & Immunology Fellowship](#)

Northwestern University Feinberg School of Medicine

## CSU Limited Submissions & Other Internal Opportunities



Welcome to CSU's InfoReady system for announcements, applications, & reviews of limited submission, internal funding, & internal program opportunities!

The Office of the Vice President for Research's (OVPR) Research Acceleration Office (RAO) manages limited submission opportunities.

Questions? Contact Dinaida Egan:  
[dinaida.lopez@colostate.edu](mailto:dinaida.lopez@colostate.edu)

To join the Limited Submissions Announcement Listserv: <https://lists.colostate.edu/cgi-bin/mailman/listinfo/limited-submissions>

### Tips:

- The Home page displays open opportunities. The Calendar tab also displays closed opportunities.
- To view requirements/submit, select an opportunity and click "Apply".
- Internal deadlines include date & TIME, usually 5:00 pm MT.
- "STILL OPEN" limited opportunities passed the initial Internal Deadline with slots remaining. These stay open until filled by the first applicant(s), without internal review, title only required, until the Funding Org Deadline.
- Don't see an opportunity? Contact RAO
- Opportunities post: Mondays
- [More](#)

Search: 

Title	Funding Available	Internal Submission Deadline	Funding Org Deadline
CSU - Centers, Institutes and Other Special Units (CIOSU) - New Application/Registration FY23			
John G. Duncan Charitable Trust - 2023	\$250,000	01/31/2023	03/31/2023
STILL OPEN - DOE/EERE - AMMTO-BTO and OE FY22 Multi-Topic FOA (DE-FOA-0002884)	\$10,000,000	02/3/2023	04/7/2023

## Submission Process

### Limited Submissions:

1. Opportunity posts on Home page and announcement sent to Listserv.
2. Research Associate Deans (RADs) share opportunity.
3. Applicants utilize InfoReady to submit internal pre-proposal.
  - To view requirements/submit, select the opportunity and click "Apply". **Internal deadlines are 5:00 pm MT.**
4. For automatic selection (*apps < limit*):
  - Approval notice sent to applicant(s), applicable RADs, college pre-award, OSP team.
5. For internal competition (*apps > limit*):
  - RADs evaluate/approve submissions and internal reviewers complete reviews, via InfoReady.
  - The OVPR determines which internal pre-proposal(s) move forward for submission to sponsor.
  - Approval notice sent to applicant(s), applicable RADs, college pre-award, OSP team.
6. Selected applicant(s) complete KRPD record and external submission.

### Other Internal Opportunities:

1. To view requirements/submit, select the opportunity and click "Apply". **Internal deadlines are generally 5:00 pm MT.**

Review/selection may take 4-6 weeks

# Agency Websites

The screenshot displays the NSF website's 'Funding' page. At the top, the NSF logo and tagline 'WHERE DISCOVERIES BEGIN' are visible, along with a search bar and links for 'Contact' and 'Help'. A navigation bar includes links for 'Research Areas', 'Funding', 'Awards', 'Document Library', 'News', and 'About NSF'. The 'Funding' section is highlighted, and a dropdown menu is open, showing options: 'All Documents', 'National Center for Science and Engineering Statistics (NCSES)', 'Obtaining Documents', and 'Search Documents'. The main content area features a 'Find Funding' section with a search bar and a link to 'Advanced Funding Search'. Below this is an 'A-Z Index' section with a row of buttons for each letter of the alphabet. A sidebar on the left lists various funding-related links such as 'About Funding', 'Browse Funding Opportunities A-Z', 'Due Dates', 'Find Funding', 'Merit Review', 'Policies and Procedures', 'Preparing Proposals', 'Recent Opportunities', 'Small Business', and 'Transformative Research'.

NSF National Science Foundation  
WHERE DISCOVERIES BEGIN

Contact | Help

Search

NSF Research Areas Funding Awards Document Library News About NSF

Funding

About Funding

Browse Funding Opportunities A-Z

Due Dates

Find Funding

Merit Review

Policies and Procedures

Preparing Proposals

Recent Opportunities

Small Business

Transformative Research

Home > Funding

Find Funding

You can also find NSF funding opportunities by:

Enter Your Search Term

Keyword or Title

Advanced Funding Search | Search Tips

All Documents

National Center for Science and Engineering Statistics (NCSES)

Obtaining Documents

Search Documents

Information by [email](#) or by [RSS](#).

A-Z Index

Use the [A-Z Index](#) to find funding opportunities by title.

A B C D E F G H I J K L M N O P Q R S T U V W X Y Z

# Identifying Private Foundation Grant Opportunities

- No comprehensive source of foundation grant opportunities.
- Foundation Relations curates ECI and foundation RFP lists.
- External aggregators and resources
  - SPIN
  - Philanthropy News Digest
  - Funder websites





# Notable Early Career Opportunities

---

*Details on some representative federal and foundation funding opportunities*



Colorado State University

# National Science Foundation (NSF)



- **Faculty Early Career Development Program (CAREER) - \$500K, 5 years**
  - One of the most well-known and competitive awards proposals from assistant professors (or equivalent ranks) whose proposals successfully integrate teaching and research.
- **Early-Concept Grants for Exploratory Research (EAGER) – up to \$300K, up to 2 years**
  - Supports exploratory work in early stages on untested but potentially transformative research ideas or approaches that are considered “high risk/high reward.”
- **Grants for Rapid Response Research (RAPID) - \$200K, 1 year**
  - For research that involves urgent data collection, such as for quick-response research to natural disasters.
- **Computer and Information Sciences and Engineering (CISE) Research Initiation Initiative (CRII) – up to \$175K, up to 2 years**
  - Provide essential resources to help early career researchers in computer and information sciences launch their research careers, including 48 months of graduate student support.
- **Education and Human Resources Core Research: Building Capacity in STEM Education (ECR: BCSER) – up to \$375K, 2 years**
  - Supports activities that enable early- and mid-career researchers to acquire the requisite expertise and skills to conduct rigorous fundamental research in STEM education.

# NSF CAREER Program Overview



- NSF's most prestigious award in support of early career faculty
- Foundation-wide activity, across Directorates
- In support of junior faculty who exemplify the role of **teacher-scholars**
- Program Goals:
  - Provide stable support for 5 years ( $\geq \$400K$  in most Directorates – BIO, GEO/PLR, ENG are  $\geq \$500K$ ) to allow career development of outstanding new **teacher-scholars**
  - Build a foundation for a lifetime of integrated contributions to **research and education**
  - Provide incentives to Universities to value the integration of **research and education**
  - Increase participation of those traditionally underrepresented in science and engineering
- Fit: Contact your appropriate Program Officer (<https://www.nsf.gov/crssprgm/career/contacts.jsp>) & Review past awards in your division/program (Awards->Search Awards->Advanced Search->Reference Code 1045, Select NSF Organization)
- CSU's NSF CAREER workshops generally run in the spring (by RAO, CSU Writes, Colleges/Dept)

# National Institutes of Health (NIH)



- Early Stage Investigators (ESI) and New Investigators (NI)
  - *ESI*: completed terminal research degree or end of post-graduate clinical training, whichever date is later, within the past 10 years, and has not previously successfully competed as PD/PI for a substantial NIH independent research award.
  - *New Investigator*: has not yet competed successfully for a substantial, independent award (e.g R01)
- ESI and NI applications with meritorious scores are prioritized for funding
- Several different opportunities - different Institutes have different programs (see specific Institutes)
  - K-series Research Career Development Awards, various R-series (R03, R21), some D-series (DP2, DP5)
  - Often specific to specific diseases or areas of interest to the agency (e.g. neuroimaging, pain research, immune diseases)
  - For both tenure-track faculty and clinicians
  - Often cross-cutting programs bridge health and the social sciences
- Funding levels
  - Highly dependent on program. Some just salary and benefits. Generally \$100K to \$1.2M
  - Can be highly competitive (as low as 9-10%)

# Types of Funds Available for Postdocs & ECIs at NIH

## NIH Research Career Development (K Series)

- <https://www.niaid.nih.gov/grants-contracts/career-development-awards>
- Primarily early career investigators and postdocs
- Provides protected time to conduct research and career development activities leading to independence

Credit: Hanover Research



## CAREER DEVELOPMENT AWARDS

MENTORED RESEARCH  
SCIENTIST DEVELOPMENT

K01

Usually awarded to faculty with a PhD or equivalent to support training toward independence, change to a new field, enhance workforce diversity, or return from career hiatus.

ACADEMIC CAREER  
DEVELOPMENT

K07

Intended to enhance academic or research capacity at the sponsoring institution. Junior and senior faculty may be eligible.

MENTORED CLINICAL  
SCIENTIST DEVELOPMENT

K08

**Clinical degree required.** Intended to support clinicians committed to substantial research engagement.

RESEARCH CAREER  
ENHANCEMENT

K18

Awarded to established investigators to broaden their research expertise or transition into new fields.

TRANSITION TO  
INDEPENDENCE

K22

Usually a two-phase award with a mentored component followed by an independent component at a different institution.



MENTORED PATIENT-ORIENTED  
RESEARCH DEVELOPMENT

K23

**Clinical degree required.** Intended to support clinicians who want to focus on patient-oriented research.

MENTORED QUANTITATIVE  
RESEARCH DEVELOPMENT

K25

Intended to support faculty in quantitative sciences and engineering refocus their efforts on health-related research.

EMERGING MENTORED  
GLOBAL LEADER

K43

Intended to support faculty with health-related research programs in low and middle-income countries (not the US).

PATHWAY TO  
INDEPENDENCE

K99/  
R00

Transition from post-doctoral position to faculty position.





# Other Federal Agencies - Young Investigator Programs (YIPs)

- Many of the Federal research agencies have Young Investigator Programs
  - DARPA, AFOSR, ARO, FDA, NSA, ONR, NASA
- General Observations
  - Eligibility rules relative to time from degree or faculty position
    - 5-10 years from Ph.D.
  - Funding levels: ~\$40-50K up to ~\$750K
  - Highly competitive
    - As few as 2-3/year up to ~200 (DOE)

# National Endowment for the Humanities (NEH)



- Cultural institutions (e.g. museums, archives, libraries, etc.) and individuals
  - Aimed at teaching, learning research, original scholarship, resource preservation and lifelong learning in the humanities
  - **Some possible programs for early career investigators**
- Summer stipends – 2 months funding (~9-10% funding rate)
- Summer seminars and institutes (~32% funding rate)
  - PD programs in the humanities for school teachers & University faculty
- NEH Fellowships (~8% funding rate)
  - Digital projects encouraged

# Other Federal Opportunities

- **Kluge Fellowships: Library of Congress**
  - John W. Kluge Center - to conduct research using Library of Congress collections and resources for a period of four to eleven months (\$4200/mo).
  - Research in the humanities and social sciences, especially interdisciplinary, cross-cultural or multilingual
  - Ph.D. or other terminal advanced degree conferred w/in 7 years of the deadline
- **Fulbright Scholar Program**
  - Teaching, research or combination teaching/research awards in over 125 countries
  - Available to artists, journalists, scientists, lawyers, etc.
  - New: more opportunities for flexible, multi-country grants

# Selected Private Foundation ECI Awards

- **Sloan Research Fellowships**
  - \$75K total, basic science focus (chemistry, computer science, Earth system science, economics, mathematics, neuroscience, physics), 115+ total awards, no limit on applications, support over 2 years
- **Pew Biomedical Scholars**
  - \$300K total, biomedical/human health research focus, limited submission (22 total awards, 1 CSU applicant per year), support over 4 years
- **Webb-Waring/Boettcher Investigators**
  - \$235K total, biomedical research focus, internal CSU award process, 1 or 2 awards per year, support for up to 3 years

# Other Notable Foundation ECI Awards

- Beckman Young Investigators
- Blavatnik Awards for Young Scientists
- Camille Dreyfus Teacher-Scholar Awards
- Burroughs Wellcome Fund: Career Awards at the Scientific Interface
- Mallinckrodt Grants
- HHMI Faculty Scholars
- Cottrell Scholar Awards
- Searle Scholars
- Simons Investigators
- W.T. Grant Scholars
- Smith Richardson



# What should I do next?

---

*Steps to take post-workshop*



Colorado State University

# Meet Key People

---

- Research Associate Dean
- Research administration staff in your department/college
- Mentors & potential references/letter-writers
- Previous awardees
- CSU grant support units



# Build your skills

- Talk to your college's Research Associate Dean - ask for advice about content, processes, and opportunities
- Attend workshops and tutorials on proposal writing, budgeting, and other essential skills
- Check eligibility requirement for opportunities of interest even if you don't intend to apply in the near term
- Join working/review groups and cohorts with CSU Writes to generate drafts and participate in peer-review. Talk with colleagues about the superlative elements of your background/vision, and its articulation for proposals.
- Attend opportunity-specific webinars from sponsors
- Create a career plan with the Research Acceleration Office
- Build a network of collaborators
- Build mentorship relationships and talk to previous awardees
- Learn everything you can about relevant partnership opportunities, sponsors, funded projects, program officers, and review process



# Understand the Business Process - OSP



- **At least 5 business days prior to Sponsor Deadline**
  - Draft Budget in KR PD
  - All other required business elements, e.g. Budget Justification
- **At least 3 business days prior to Sponsor Deadline**
  - Proposal containing OSP approved business elements 'Submitted to Routing'
- **1 business day prior to Sponsor Deadline**
  - All proposal elements final in KR PD or in the sponsor portal, ready for submission

# Roles and Responsibilities

## PI or Unit Responsibilities



Creating or populating Kuali Research Proposal Development (KR PD) records

Developing proposal budgets

Reviewing technical/scientific aspects of proposals

Preparing all required proposal documents

Reviewing proposals for spelling, grammar, and formatting errors/issues

## OSP Responsibilities



Review of Sponsor Guidelines for eligibility, budget, and submission information

Review KR PD Basics for title, proposal type, project dates, etc.

Review KR PD Budget for sponsor specific additions, cost-share, unallowable costs

Review KR PD Attachments. Sign SF424 forms, review CSU required documents, scan Scope of Work. Review Sub-recipient documents

Review application portal and/or forms. Complete assurances, reps and certs.

Check if PHS FCOI Training and CSU COI Disclosures have been completed



# Next Steps

- **Assess Proposal Opportunities:** Fit with mission/objectives/priorities of the funder? What and who has been funded previously? Is the opportunity right for your career progression?
- **Talk with a Program Officer and Others:** If permitted, reach out to a program officer. Do your homework and have a short list of specific questions.
- **Proposal Strategy and Writing:**
  - *Time* – Proposal success correlates not only to effort, but to time investment. Develop a timeline and detail all of the elements and people needed. Take initial steps as soon as you select an opportunity to lay the groundwork and build momentum. This will help you spend your final days before the deadline on perfecting the narrative rather than administrative/secondary tasks.
  - *Strategize and Plan* – Get feedback about your initial premise/approach, its fit with sponsor priorities, and its potential against the competition.
  - *Proposal Development, Review, & Revision* – Your proposal will benefit from a diversity of perspectives—recruit reviewers from your field, other disciplines, and laypeople. Seek comments at least twice (first and final drafts). Be sure to allow adequate time for reviewers and subsequent revisions.

# Next Steps

- **Proposal Finalization & Submission:**
  - A large number of proposals prepare for “preventable” reasons. Work with others to take a very careful look at the final details and to ensure you’ve followed formatting and proposal guidelines exactly.
  - Work with college pre-award and Office of Sponsored Programs to create a record and finalize submission. Be aware of internal deadlines.
- **Learning from Reviews:** Consider the merit of critiques and modify to address. Be attentive to criticisms from multiple reviewers.



# Questions

---



# Thank You

---



Colorado State University