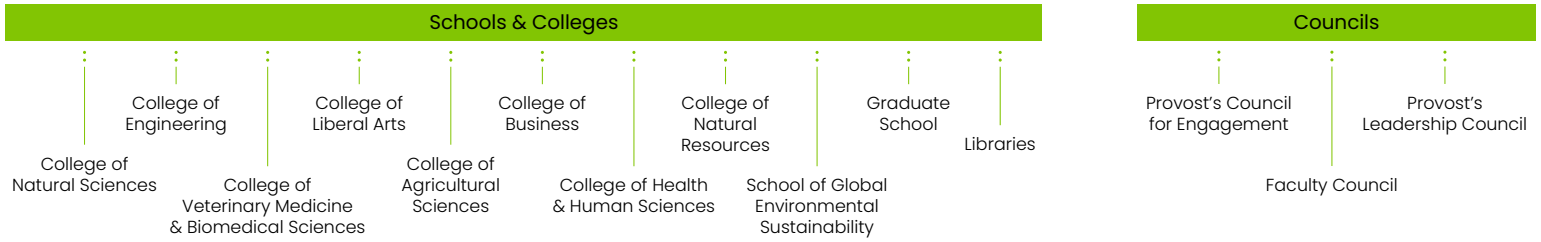


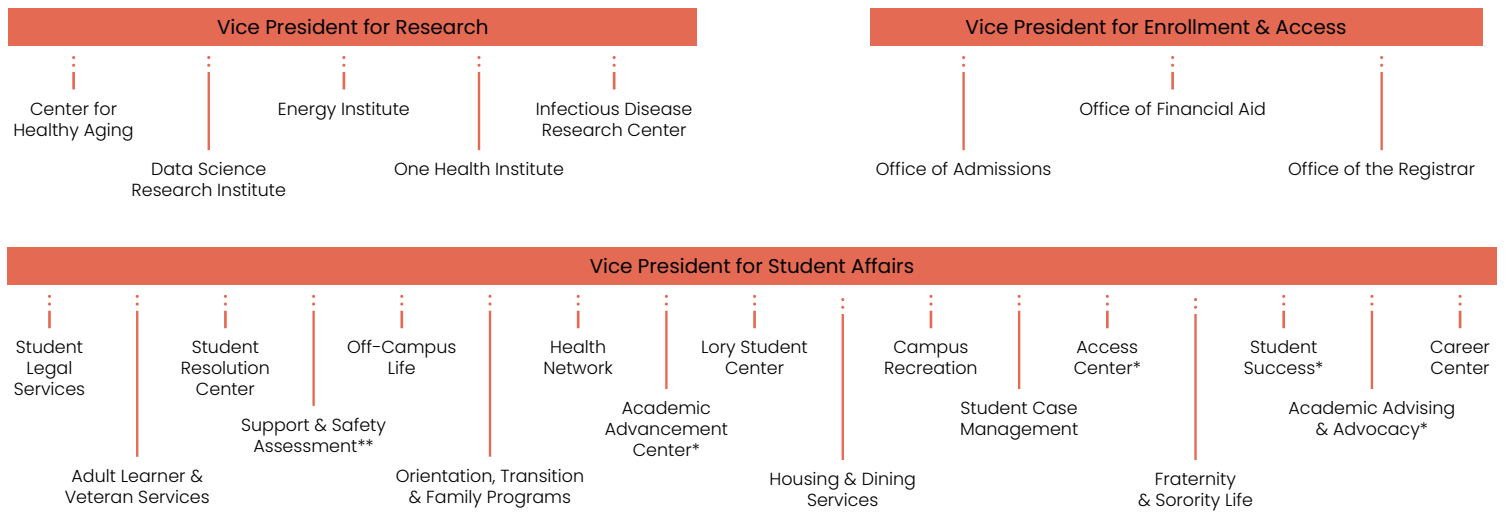
Office of the Provost & Executive Vice President

Reporting Units and Areas of Oversight (graphic)

Academic Affairs

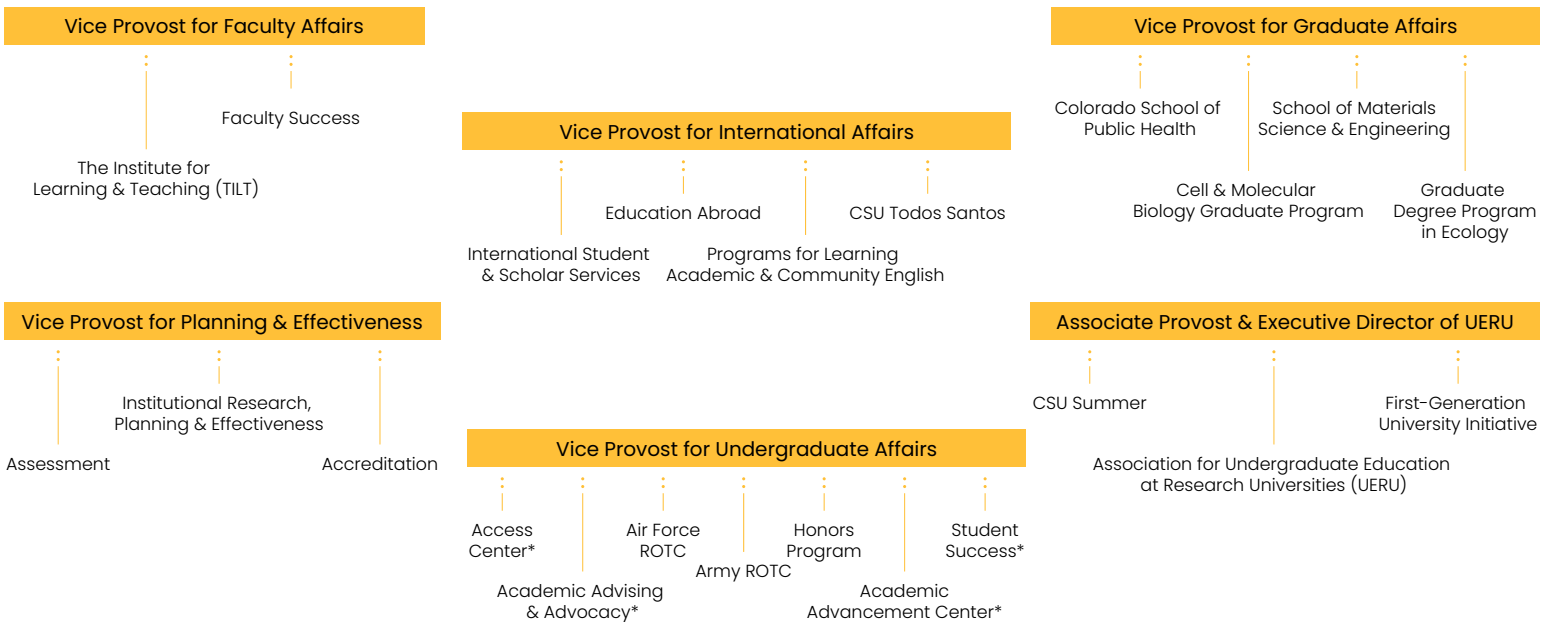


Vice President Divisions



*Dual report to Vice Provost for Undergraduate Affairs.
 **Dual report to University Operations.

Provost Administrative Units



*Dual report to Vice President for Student Affairs.

Office of the Provost & Executive Vice President
Reporting Units and Areas of Oversight (text)

Academic Affairs

- Schools & Colleges
 - [College of Natural Sciences \(CNS\)](#)
 - [College of Engineering \(WSCOE\)](#)
 - [College of Veterinary Medicine & Biomedical Sciences \(CVMBS\)](#)
 - [College of Liberal Arts \(CLA\)](#)
 - [College of Agricultural Sciences \(CAS\)](#)
 - [College of Business \(CoB\)](#)
 - [College of Health & Human Sciences \(CHHS\)](#)
 - [College of Natural Resources \(CNR\)](#)
 - [School of Global Environmental Sustainability \(SoGES\)](#)
 - [Graduate School](#)
 - [Libraries](#)
- [Provost's Council for Engagement](#)
- [Faculty Council](#)
- [Provost's Leadership Council](#)

Vice President Divisions

- Vice President for [Research](#)
 - [Center for Healthy Aging \(CHA\)](#)
 - [Data Science Research Institute \(DSRI\)](#)
 - [Energy Institute](#)
 - [One Health Institute \(OHI\)](#)
 - [Infectious Disease Research Center \(IDRC\)](#)
- Vice President for [Enrollment & Access](#)
 - [Access Center](#)
 - [Office of Admissions](#)
 - [Office of Financial Aid](#)
 - [Office of the Registrar](#)
- Vice President for [Student Affairs](#)
 - [Student Legal Services](#)
 - [Adult Learner & Veteran Services](#)
 - [Student Resolution Center \(SRC\)](#)

- [Support & Safety Assessment](#)
- [Off-Campus Life](#)
- [Orientation, Transition & Family Programs](#)
- [Health Network](#)
- [Academic Advancement Center](#)
- [Lory Student Center \(LSC\)](#)
- [Housing & Dining Services \(HDS\)](#)
- [Campus Recreation](#)
- [Student Case Management](#)
- [Access Center](#)
- [Fraternity & Sorority Life \(FSL\)](#)
- [Student Success](#)
- [Academic Advising & Advocacy](#)
- [Career Center](#)

Provost Administrative Units

- Vice Provost for Faculty Affairs
 - [Faculty Success](#)
 - [The Institute for Learning and Teaching \(TILT\)](#)
- Vice Provost for [International Affairs](#)
 - [International Student and Scholar Services \(ISSS\)](#)
 - [Education Abroad](#)
 - [Programs for Learning Academic and Community English \(PLACE\)](#)
 - [CSU Todos Santos](#)
- Vice Provost for Graduate Affairs
 - [Colorado School of Public Health](#)
 - [Cell & Molecular Biology Graduate Program](#)
 - [School of Materials Science and Engineering](#)
 - [Graduate Degree Program in Ecology](#)
- Vice Provost for Planning & Effectiveness
 - [Assessment](#)
 - [Institutional Research, Planning & Effectiveness \(IRP&E\)](#)
 - [Accreditation](#)
- Vice Provost for Undergraduate Affairs
 - [Access Center](#)
 - [Academic Advising & Advocacy](#)
 - [Air Force ROTC](#)
 - [Army ROTC](#)

- [Honors Program](#)
- [Academic Advancement Center](#)
- [Student Success](#)
- Associate Provost & Executive Director of UERU
 - [CSU Summer](#)
 - [Association for Undergraduate Education at Research Universities \(UERU\)](#)
 - [First-Generation University Initiative \(FGUI\)](#)