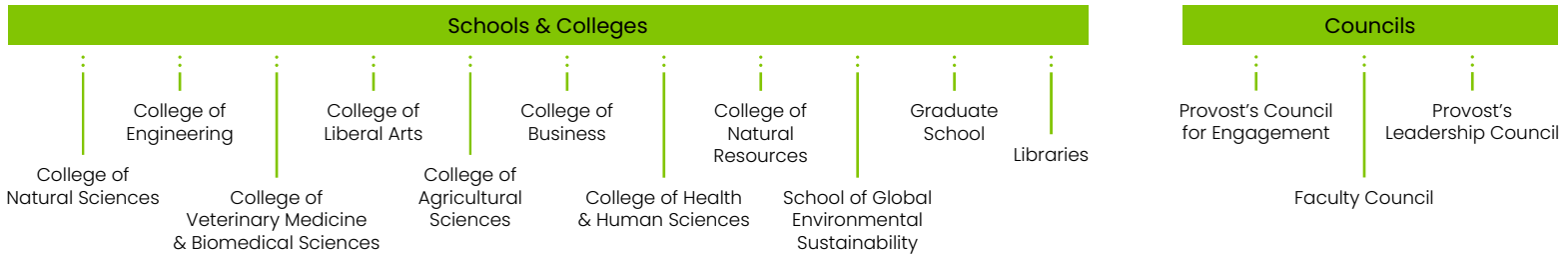


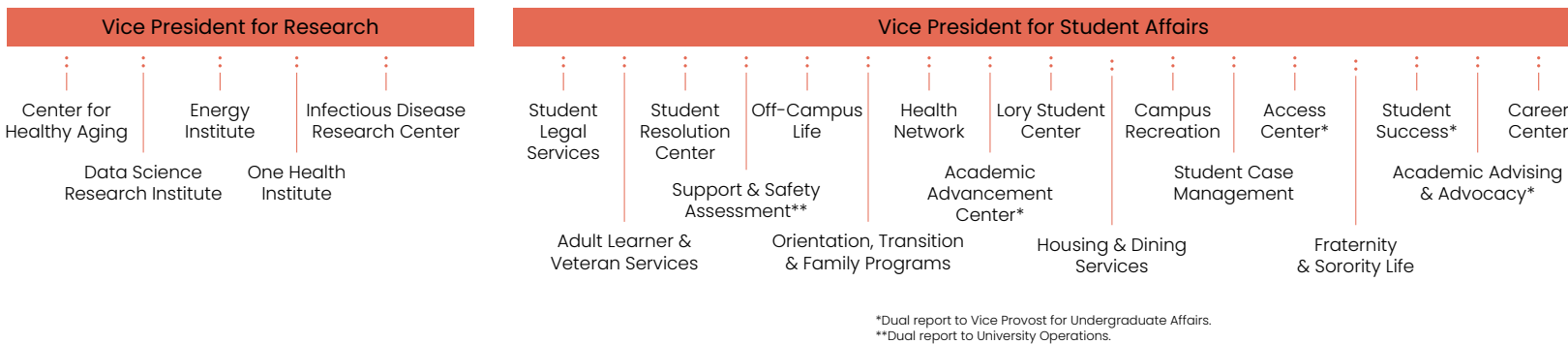
# Office of the Provost & Executive Vice President

## Reporting Units and Areas of Oversight

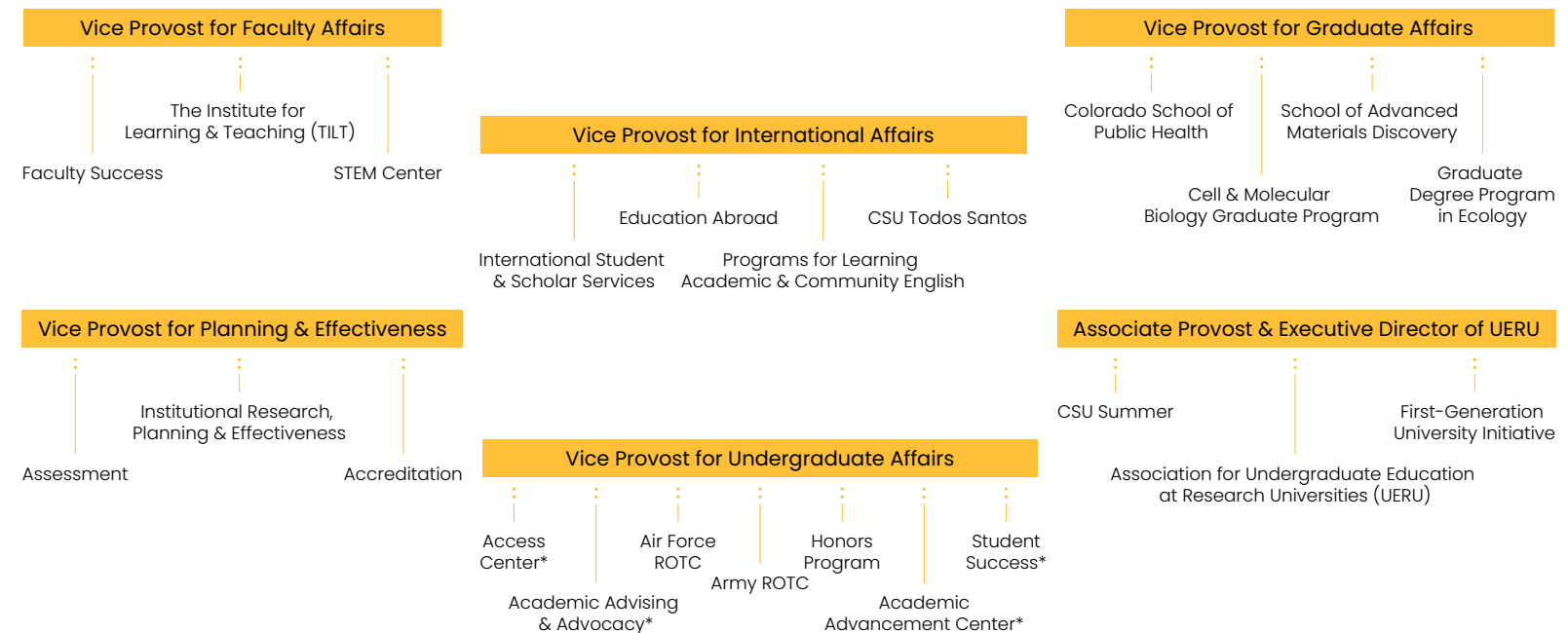
### Academic Affairs



### Vice President Divisions



### Provost Administrative Units



\*Dual report to Vice President for Student Affairs.



## Office of the Provost & Executive Vice President Reporting Units and Areas of Oversight (list)

### Academic Affairs

- Schools & Colleges
  - [College of Natural Sciences \(CNS\)](#)
  - [College of Engineering \(WSCOE\)](#)
  - [College of Veterinary Medicine & Biomedical Sciences \(CVMBS\)](#)
  - [College of Liberal Arts \(CLA\)](#)
  - [College of Agricultural Sciences \(CAS\)](#)
  - [College of Business \(CoB\)](#)
  - [College of Health & Human Sciences \(CHHS\)](#)
  - [College of Natural Resources \(CNR\)](#)
  - [School of Global Environmental Sustainability \(SoGES\)](#)
  - [Graduate School](#)
  - [Libraries](#)
- [Provost's Council for Engagement](#)
- [Faculty Council](#)
- [Provost's Leadership Council](#)

### Vice Presidential Divisions

- Vice President for [Research](#)
  - [Center for Healthy Aging \(CHA\)](#)
  - [Data Science Research Institute \(DSRI\)](#)
  - [Energy Institute](#)
  - [One Health Institute \(OHI\)](#)
  - [Infectious Disease Research Center \(IDRC\)](#)
- Vice President for [Student Affairs](#)
  - [Student Legal Services](#)
  - [Adult Learner & Veteran Services](#)
  - [Student Resolution Center \(SRC\)](#)
  - [Support & Safety Assessment](#)
  - [Off-Campus Life](#)
  - [Orientation, Transition & Family Programs](#)
  - [Health Network](#)
  - [Academic Advancement Center](#)
  - [Lory Student Center \(LSC\)](#)



## OFFICE OF THE PROVOST COLORADO STATE UNIVERSITY

- [Housing & Dining Services \(HDS\)](#)
- [Campus Recreation](#)
- [Student Case Management](#)
- [Access Center](#)
- [Fraternity & Sorority Life \(FSL\)](#)
- [Student Success](#)
- [Academic Advising & Advocacy](#)
- [Career Center](#)

### Provost Administrative Units

- Vice Provost for Faculty Affairs
  - [Faculty Success](#)
  - [The Institute for Learning and Teaching \(TILT\)](#)
  - [STEM Center](#)
- Vice Provost for [International Affairs](#)
  - [International Student and Scholar Services \(ISSS\)](#)
  - [Education Abroad](#)
  - [Programs for Learning Academic and Community English \(PLACE\)](#)
  - [CSU Todos Santos](#)
- Vice Provost for Graduate Affairs
  - [Colorado School of Public Health](#)
  - [Cell & Molecular Biology Graduate Program](#)
  - [School of Advanced Materials Discovery](#)
  - [Graduate Degree Program in Ecology](#)
- Vice Provost for Planning & Effectiveness
  - [Assessment](#)
  - [Institutional Research, Planning & Effectiveness \(IRP&E\)](#)
  - [Accreditation](#)
- Vice Provost for Undergraduate Affairs
  - [Access Center](#)
  - [Academic Advising & Advocacy](#)
  - [Air Force ROTC](#)
  - [Army ROTC](#)
  - [Honors Program](#)
  - [Academic Advancement Center](#)
  - [Student Success](#)
- Associate Provost & Executive Director of UERU
  - [CSU Summer](#)
  - [Association for Undergraduate Education at Research Universities \(UERU\)](#)
  - [First-Generation University Initiative \(FGUI\)](#)